



DeepBlue

Sensor



S-model

Travel time, O/D matrices, incident detection, Online web based applications
Bluetooth, Wi-Fi, BLE, GPS, modem, Dual-SIM, Ethernet, Multi-color LED,
Wireless device detection, tracking, RTC Battery, Non-volatile memory
Field proven, easy set-up and configuration, multi-lane, side-fire,
Cost effective, Low power, Self-diagnostics, Autonomous,
Reliable and secure transmission

With our dedication to continuous development the specifications are subject to change. To verify the current information please visit www.deepbluesensor.com

Passionately designed by





DeepBlue

Sensor

POWER SUPPLY

12-48VDC
3.5W typical
PoE (Power over Ethernet)

CPU & MEMORY

ARM 9 Processor
128 MB RAM / Flash
Micro SD storage

COMMUNICATIONS

Ethernet
Internal modem
Dual SIM-Card slot
Remote Sensor Access

OPERATIONS

Linux based OS
LED for operations diagnostics

ENVIRONMENTAL

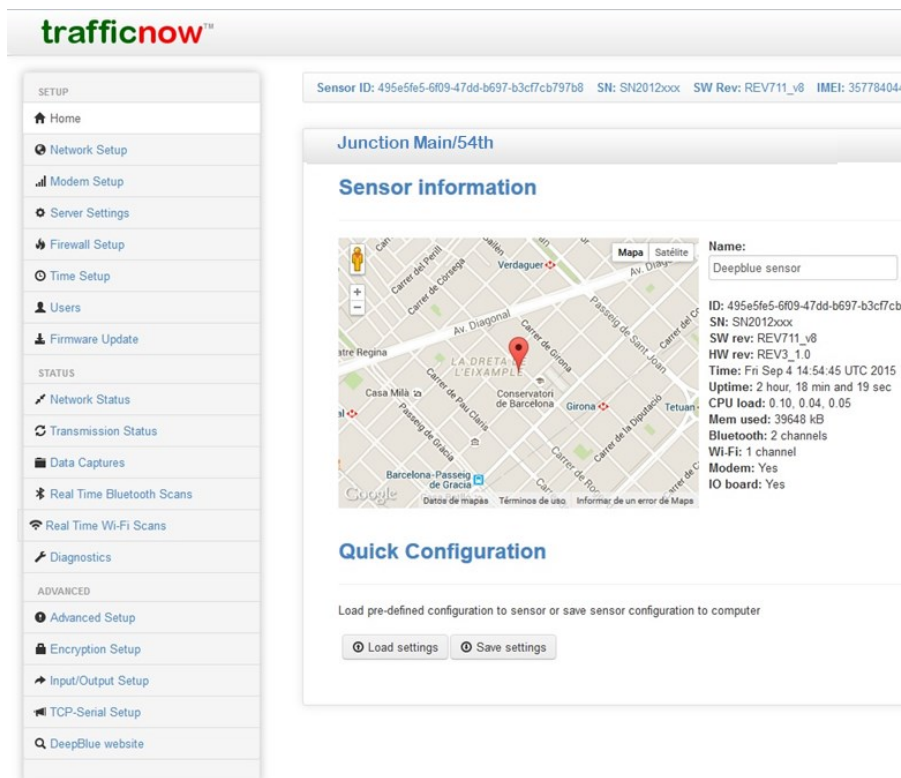
-40°C to +80°C
0-90% humidity
NEMA 4 / IP65 housing
Shock/vibration: NEMA TS2-2003

DIMENSIONS & WEIGHT

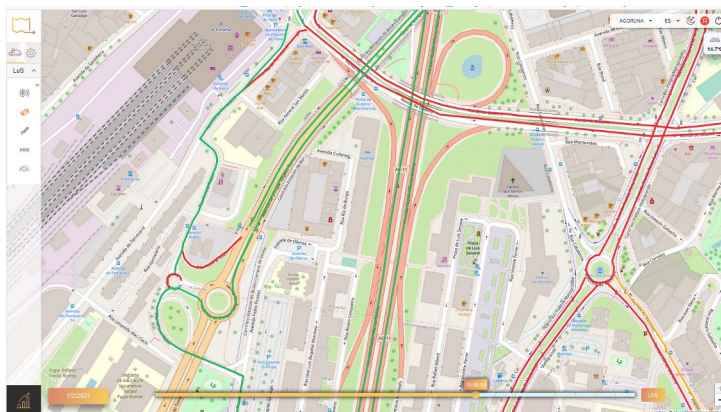
H x W x L 200 mm x 148 mm x 62 mm
0.66 kg (1.035 including bracket)

DETECTION

Bluetooth detection
Wi-Fi detection
BLE detection



S-model



REGULATORY

RoHS Compliant
CE, FCC, IC certified

With our dedication to continuous development the specifications are subject to change. To verify the current information please visit www.deepbluesensor.com

Passionately designed by

